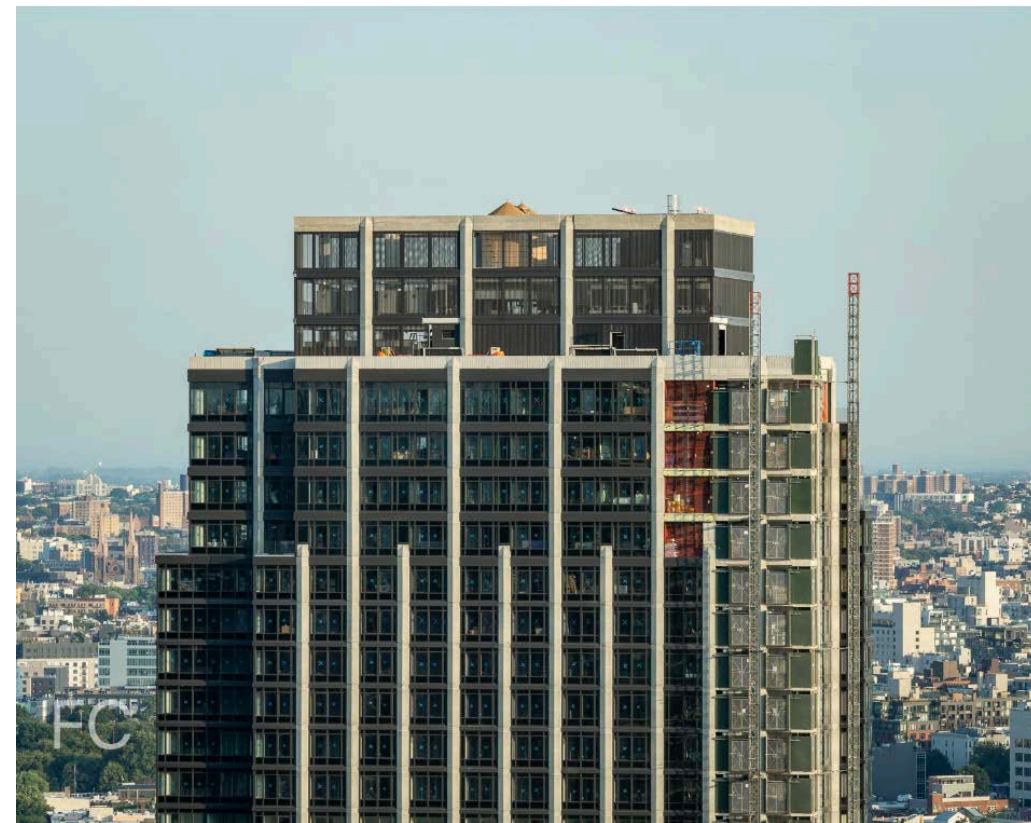


## FIELD CONDITION

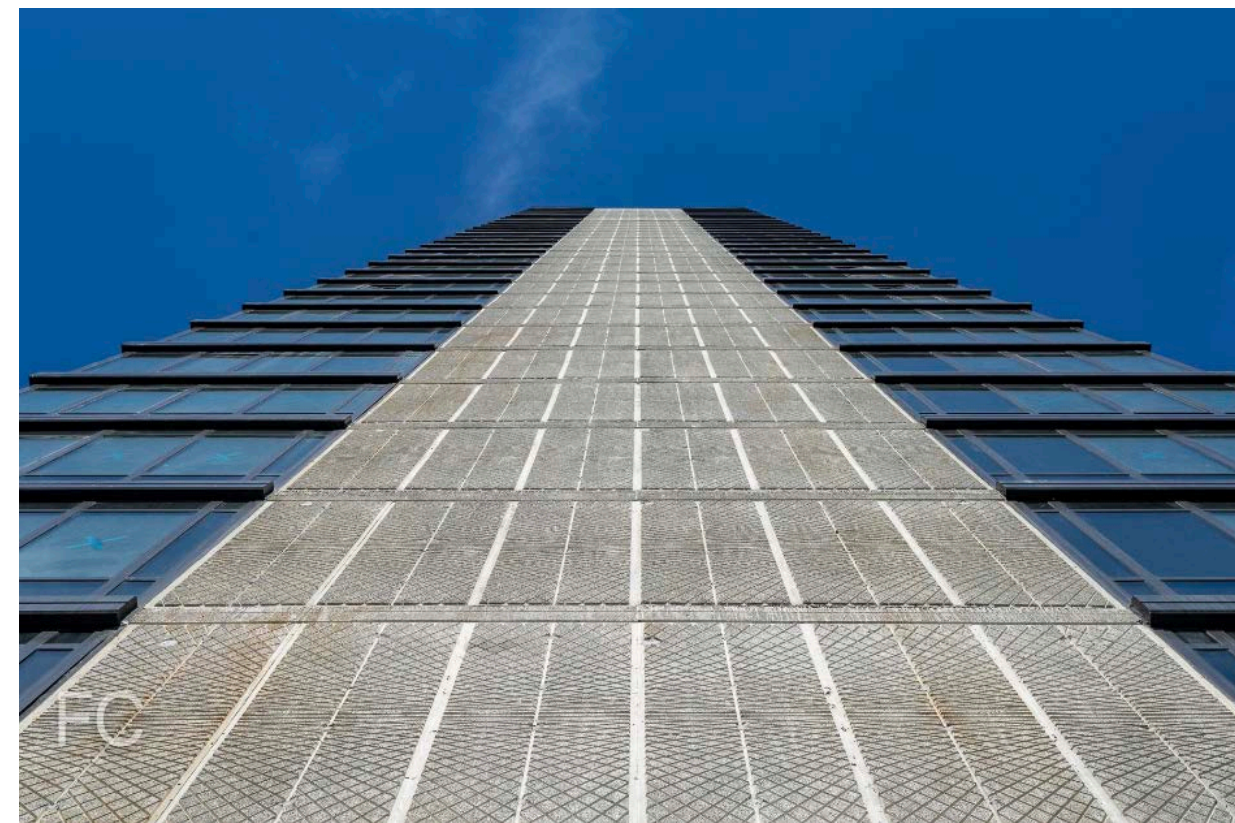
## Construction Update: 16 Dupont at Greenpoint Landing

Facade installation is wrapping up at 40-story residential rental tower 16 Dupont at Greenpoint Landing by Rockefeller Group and Park Tower Group. Designed by Gerner Kronick + Valcarel (GKV), the facade features piers of textured cast-in-place concrete with a geometric pattern. Dark toned window wall glazing with metal spandrel covers clads the space between the concrete piers.

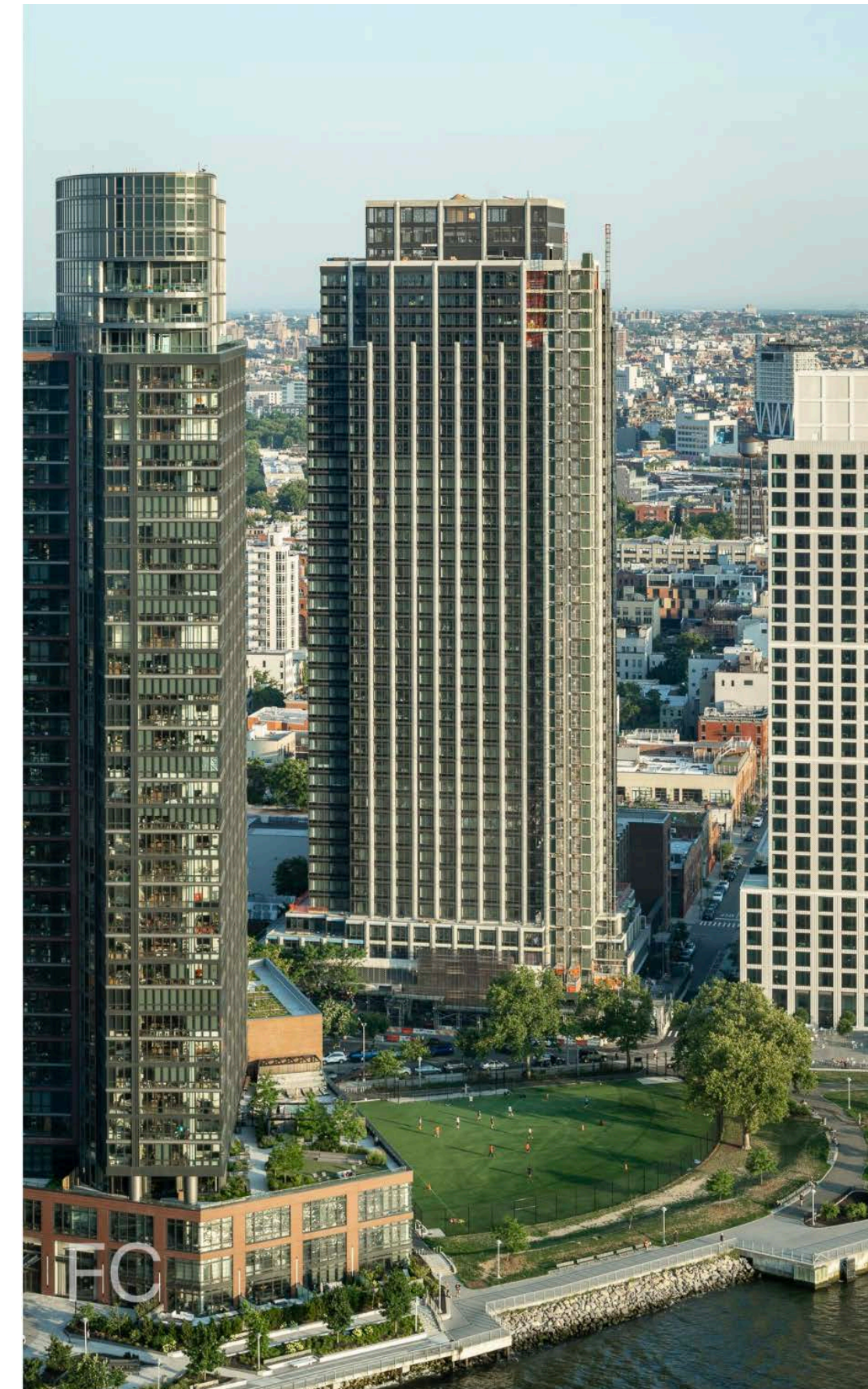
When completed, the development will offer 381 rental units, ranging in size from studios to three-bedroom residences. Amenities will include a rooftop pool and fitness center. The tower will also contain 2,548 square feet of commercial space and an enclosed parking garage for 138 vehicles.



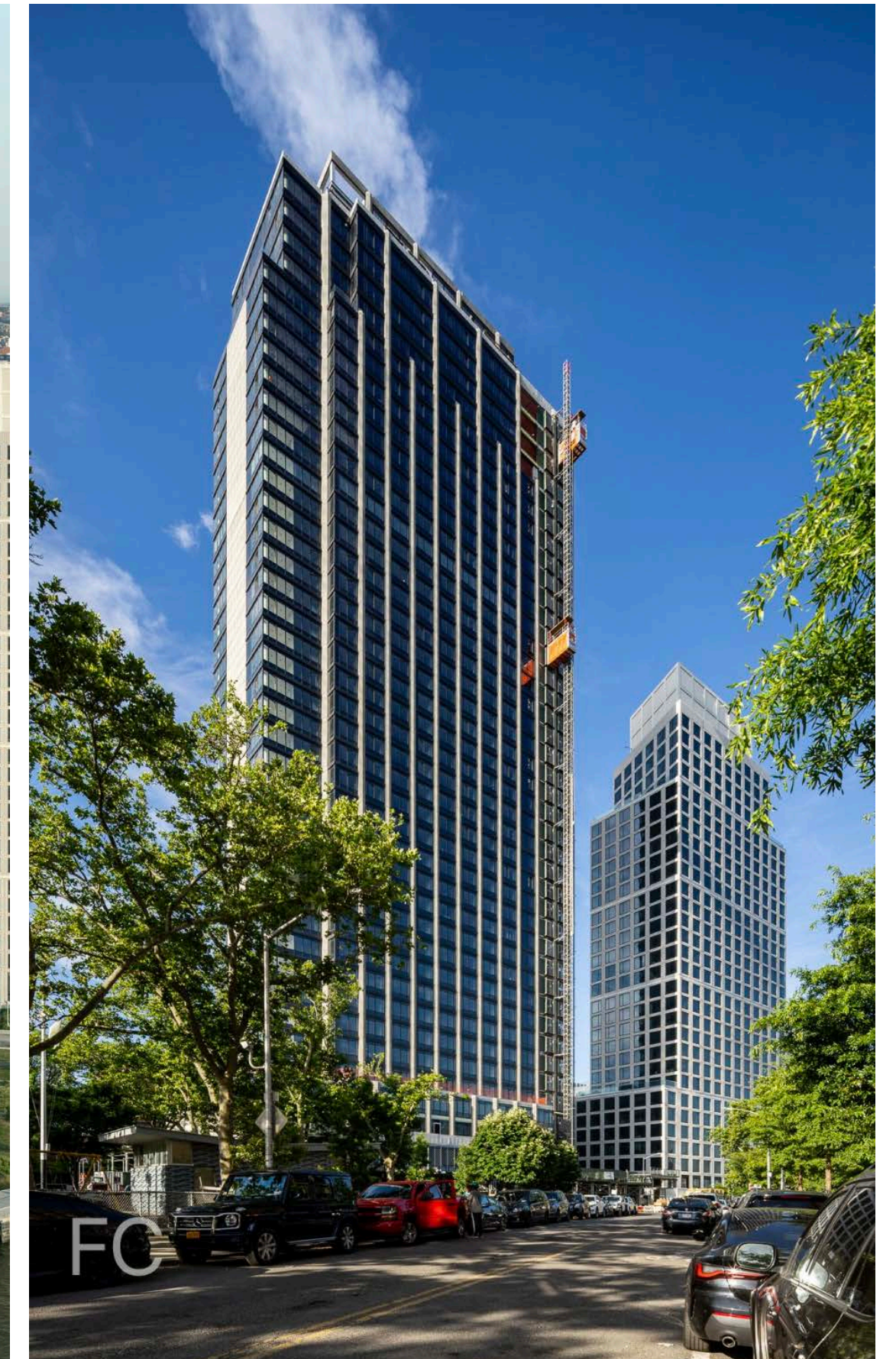
Closeup of the north facade of the tower crown.



Looking up at the east facade.



North facade.



Northeast corner of 16 Dupont (left) and Eagle + West (right) from Commercial Street.





Two Blue Slip (left), 16 Dupont (center), and Eagle + West (right).



Looking up at the north facade.



Looking up at the north facade.



View to the west towards Midtown Manhattan.



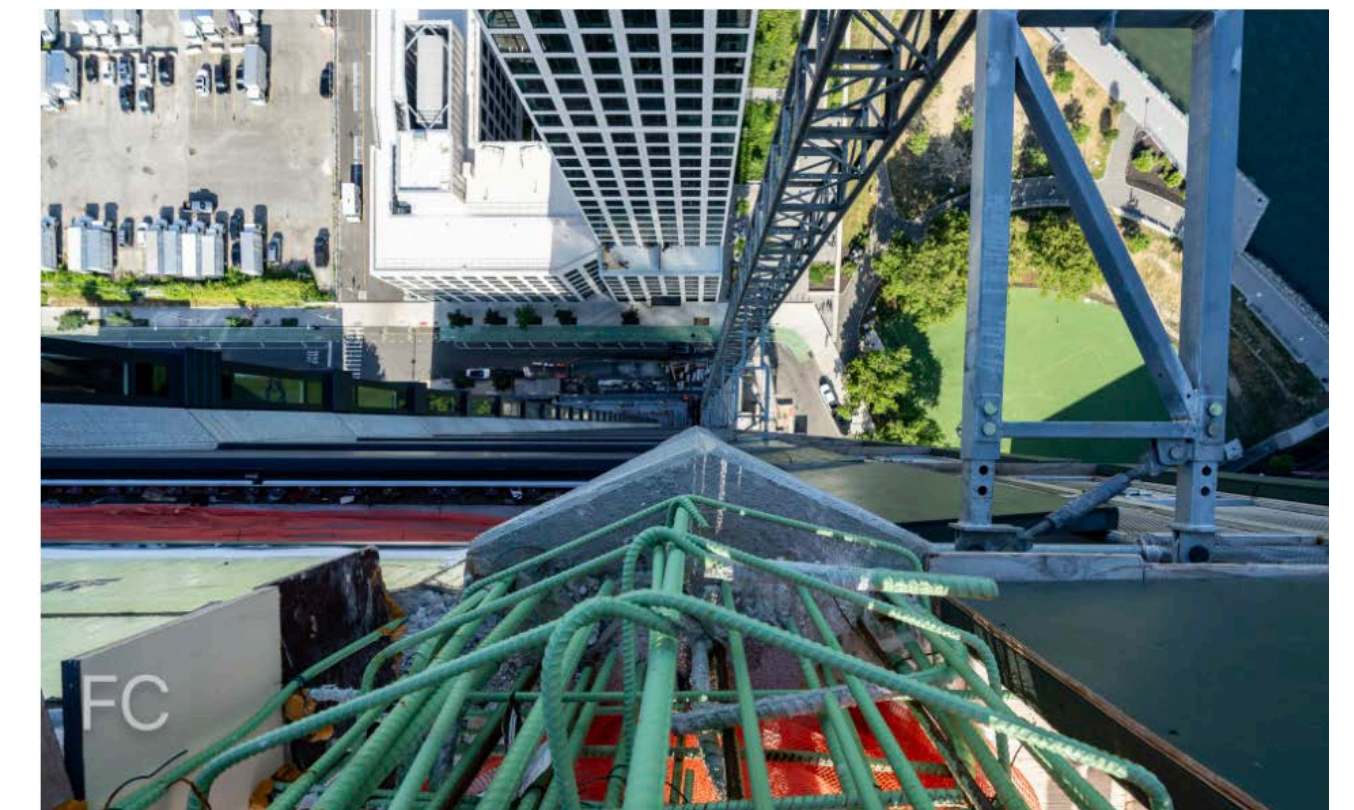
View to the northwest towards Midtown Manhattan and Hunters Point South.



View to the south towards Greenpoint and Lower Manhattan.



View to the east towards Greenpoint and Long Island City.







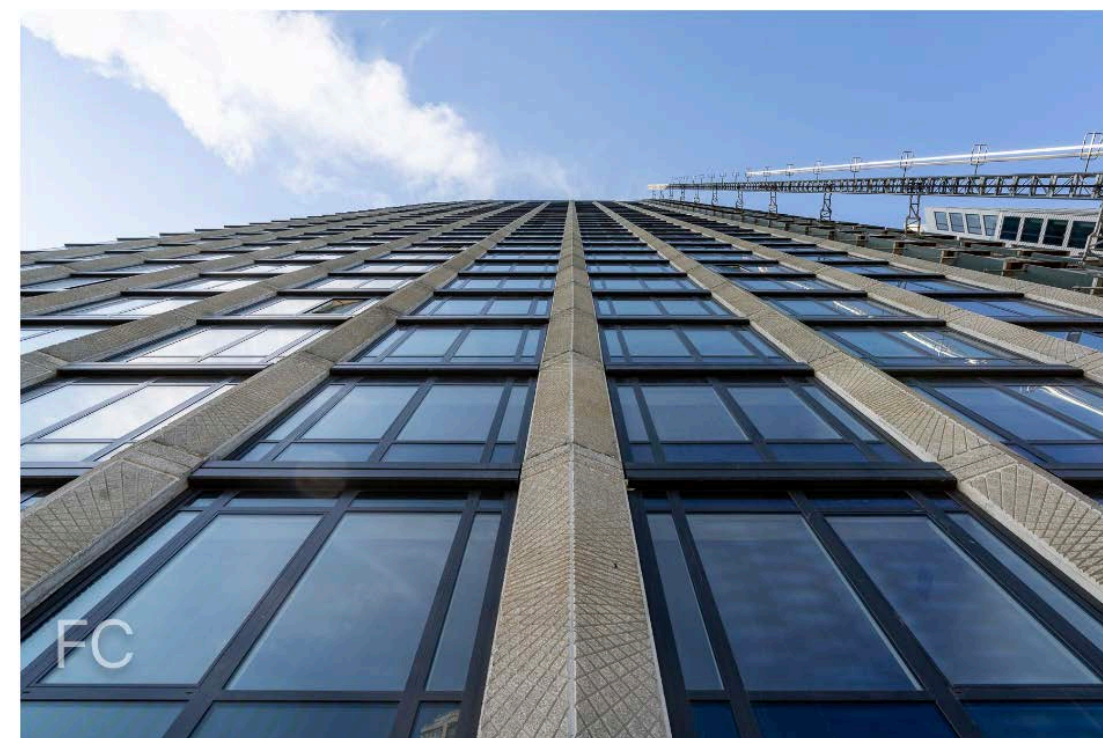
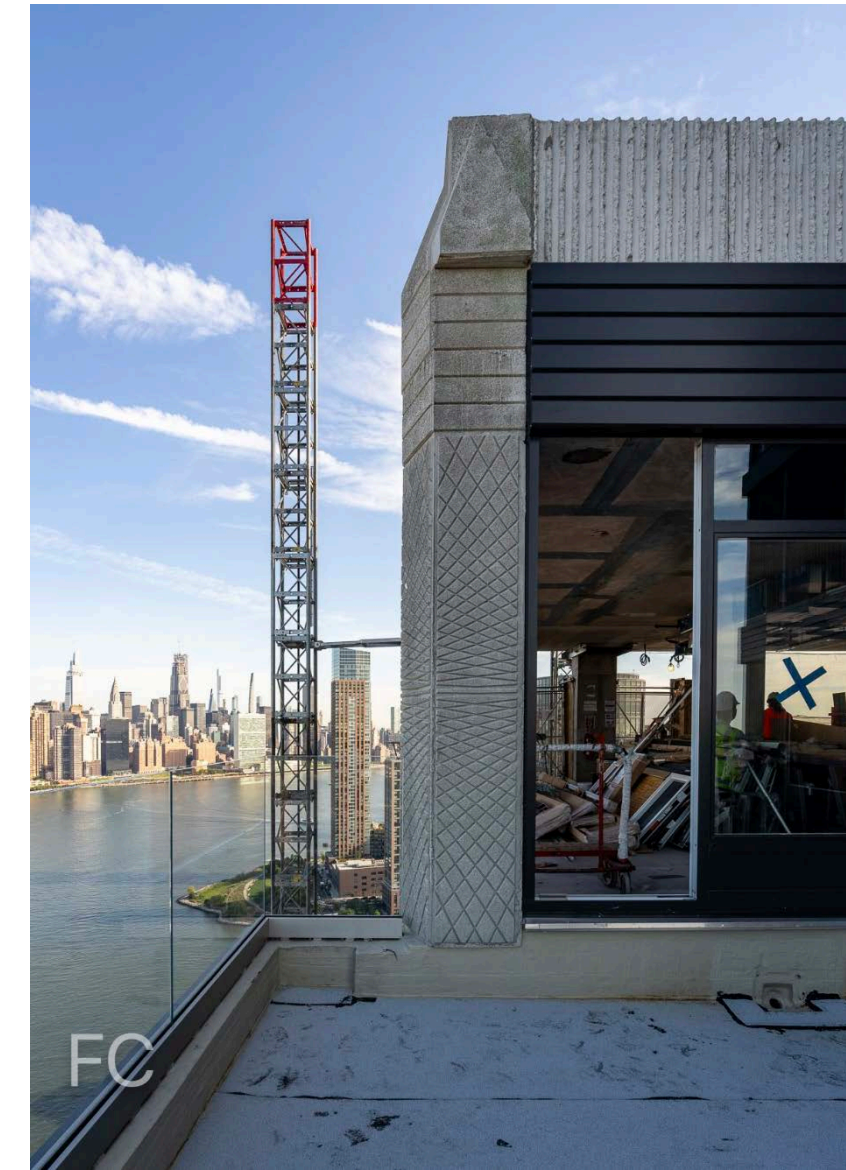
Southwest corner of Eagle + West (left) and 16 Dupont (right).



Northwest corner of the tower.



Southwest corner of the tower.



Northwest corner of 16 Dupont (left) and Eagle + West (right).



View to the northwest towards Midtown from a lower terrace floor.